

The ISM logo is a white square containing the letters 'ISM' in a bold, black, sans-serif font.

University of  
Management  
and Economics



# ISM Factsheet ———

## '25 - '26

---

One Step Ahead.

# ISM University of Management and Economics



ISM University of Management and Economics is one of the top-ranked business universities in the Baltics, founded by BI Norwegian Business School. Our name has always been closely associated with quality, international experience, prestige, leadership and constant progress.

No. 1 in Lithuania in:

Management

Economics

Business

Finance

# ISM – the first in the Baltics to receive AACSB accreditation

**ISM University has become the first university in the Baltic countries to receive the prestigious AACSB accreditation for business schools.** This is the highest global recognition, confirming the exceptional quality of ISM's studies and research, and demonstrating the advancement of higher education across Lithuania.

**Only 6% of the world's top business schools receive AACSB accreditation.** Among them are renowned institutions such as Harvard, Stanford, INSEAD, and London Business School. Now, ISM is proudly among these global leaders!

"AACSB accreditation is a huge achievement for our community, especially as we celebrate the university's 25th anniversary. It places ISM among the global leaders in business education and opens up even more opportunities for our students and alumni."

- Dr. Dalius Misiūnas, President of ISM University of Management and Economics



## A Stronger Degree – Expanded Opportunities

This achievement opens even more opportunities for our students and alumni: ISM's diploma gains even stronger recognition in the international market, and career prospects expand further. It is a sign that by choosing ISM, you are choosing a high-quality, globally respected education and a stronger foundation for your future success.

73% of CEOs in Fortune 100 companies and 75% of top-paid S&P 500 CEOs hold degrees from AACSB-accredited schools.

83% of AACSB school alumni say their education significantly boosted their earning potential.





## Our Campus



We are glad to inform you that in February 2023, ISM has relocated to the very centre of the capital – to Vilnius' former Central Post Office, located in Gediminas Avenue 7. Modern and efficient premises were adapted to our students, academics and administration. The new location, next to the Bank of Lithuania, the Lithuanian Science Council, the Lithuanian Government, other business and cultural centres, make it easier to feel the pulse of science, business and society. The 5,400 square meter space contains auditoriums, offices, a modern library, dedicated places for student learning and collaboration, and spaces for events and recreational activities. The former building of Vilnius' Central Post Office was renovated while preserving its historical heritage and using innovative technologies.



# About Us

- **Proudly accredited by the prestigious AACSB (Association to Advance Collegiate Schools of Business)**
- The highest ranked business school in Lithuania (4 Palmes, Eduniversal Business Schools Ranking)
- All levels of studies: bachelor's, master's, MBA, doctoral and executive education, short courses
- Over 100 exchange and Double degree partners in all continents of the world
- International students from over 30 different countries
- Member of EFMD (European Foundation for Management Development), globally recognised accreditation body for business schools, business school programmes, and corporate universities
- 42 % international faculty

## About Our Students

98%

graduates would recommend studies at ISM to friends or family

98%

graduates are employed in their study field

1/3

of ISM graduates have their own business

60%

start working while they are studying



# Student Nomination

Students are nominated via our [online form](#).

Once nominated to ISM, student will receive a link to ISM Online platform where he / she will be required to fill in personal information as well as upload the following documents:



- Transcript of Records
- 1 photo
- Passport / ID card copy
- Insurance copy

## NOMINATION DEADLINES:

\* Spring semester:  
1 November

\* Fall semester:  
1 May

ALL AFOREMENTIONED DOCUMENTS MUST BE UPLOADED  
AT THE SAME TIME

Having filled online application and uploaded the required documents, students need to choose courses and upload Learning Agreement to ISM online platform.

The course lists of the previous semesters can be found [here](#).

**The deadline for submitting all documents and choosing courses is December 1 (for Spring semester) and June 1 (for Fall semester).**



# Exchange at ISM: Application Process

## **Nomination and Initial Email**

After November 1 / May 1

Nominated students receive an automatic email with a link to the online system.

## **Registration and Document Upload**

Until November 15 / May 15

Students register in the online system and upload the required documents.

## **Course Selection and Learning Agreement**

Until December 1 / June 1

Students select their courses and upload their Learning Agreements to the online system.

## **Admission Letters**

In December / June

Students receive their official admission letters.

## **Exchange and Orientation Information**

Students receive detailed information about the exchange at ISM and Orientation Week.

## **Welcome Week (Mandatory)**

End of August / Beginning of February

Students participate in ISM's Welcome Week activities.

## **Course Changes (if needed)**

Last week of August – First week of September

Last week of January – First week of February

Students can make changes to their Learning Agreements only in case of schedule overlaps or other important reasons.





# Academic Calendar 2025/2026

## FALL SEMESTER

### Undergraduate Students

- **Welcome Week:**  
August 25 – 30, 2025
- **Lectures:**  
September 2 – December 12, 2025
- **Midterm Exams:**  
October 20 – 31, 2025
- **Examinations – Session 1:**  
December 15 – 23, 2025
- **Christmas Holidays:**  
December 24, 2025 – January 1, 2026
- **Examinations – Session 2:**  
January 2 – 9, 2026\*
- **Retake Exams:**  
January 12 – 23, 2026

### Graduate Students

- **Fall Semester Duration:**  
September 1, 2025 – January 30, 2026\*\*

## SPRING SEMESTER

### Undergraduate Students

- **Welcome Week:**  
January 26 – 31, 2026
- **Lectures:**  
February 2 – May 15, 2026
- **Midterm Exams:**  
March 16 – 27, 2026
- **Examinations:**  
May 18 – June 5, 2026
- **Retake Exams:**  
June 8 – 19, 2026

### Graduate Students

- **Spring Semester Duration:**  
February 2 – June 26, 2026\*\*

\*Exchange students have a possibility to participate in the Pre-Exam Session and finish their exams before Christmas Holiday. Retake Exams cannot be rescheduled.

\*\*Graduate courses are held in 1-3 week intensive modules, with exams at the end of each course.

# Registration to Courses

Students register to the courses themselves on MY.ISM online application system. All courses have quotas for international students; therefore, the seats in each course are allocated on the first come first serve basis. The quicker students fill in online application form and choose courses the better are the chances to get the seat in the preferred course.

There are three separate course lists for Bachelor, Master and Doctoral level courses.

Master (graduate) exchange students can select both Master and Bachelor (undergraduate) courses, if their home university allows it.

## Important Information

Study Language - English

### COURSE LOAD

6 or 3 ECTS  
per course

### MAXIMUM LOAD

30 ECTS per  
semester

### GRADING

10-point scale,  
cumulative

### COURSE LISTS

Published in May/  
November

### TIMETABLES

On MY.ISM ~2 weeks  
before semester

### RETAKES

Exchange students  
may retake exams  
at semester's end

**Counselist**  
**for 2025 - 2026**

# Assessment

Classes are assessed continuously (participation, small projects, group and individual work, presentations, etc.).

Cumulative Grading – in most cases, the final grade for course is formed from the midterm and final exam grades, as well as the assignment grades together. Each of these grades have different percentile values that depend on the course. For more information, please check the syllabus of each course.

## Grading at ISM

Required knowledge %	Calculated evaluation (example)	Grade	ECTS equivalent
$95 \leq x \leq 100$	9,6	10	A
$85 \leq x < 95$	9,4	9	A
$75 \leq x \leq 85$	7,9	8	B
$65 \leq x, 75$	7,1	7	C
$55 \leq x \leq 65$	5,7	6	D
$50 \leq x < 55$	5,4	5	E
$40 \leq x < 50$	4,9	4	FX
$30 \leq x < 40$	3,8	3	F
$20 \leq x, 30$	2,5	2	F
$0 \leq x < 20$	1,3	1	F



# Examination Period

Exam period is organized at the end of each semester or at the end of each module.

Final exam period schedules are announced a month before the start of the exams.

The final exams during Fall semester for Bachelor exchange students can be arranged in mid-December during the pre-exam session, so the exchange semester is finished before Christmas Holidays. In case of failed exams, students must be present in January as well, since exam retakes are organized in the second half of the month.

For spring semester there is no pre-exam session, exchange students take their exams along with regular students. Retake exams are organized in the second half of June.

In addition to the final examination, there is a two-week midterm session that takes place at the end of October during Fall semester and at the end of March during Spring semester. There are no retake periods for the mid-term exams.

Exchange students are evaluated the same way as regular ISM students and no exceptions regarding grading, exam dates or organization mode are applied.





# Important Information for Master Students

Please note that Master courses have a special schedule: classes usually take place from 5 PM - 9 PM, in modules of 1 – 3 intensive weeks per course and the exams are held right after each course. Therefore, there is no regular exam session for Master courses.

Master students have classes in the evenings and/or on Saturdays.

If Master students also select Bachelor level (undergraduate) courses, they will need to attend classes throughout the whole semester and follow both Master and Bachelor course and examination schedules.



# ISM Study Programmes

## Undergraduate Studies



### **International Business and Communication**

3.5-year programme · Fully taught in English



### **Finance**

3.5-year programme · Fully taught in English



### **Economics and Politics**

3.5-year programme · Fully taught in English



### **Business Management and Marketing**

3.5-year programme · Taught in English and Lithuanian



### **Economics and Data Analytics**

3.5-year programme · Taught in English and Lithuanian



### **Entrepreneurship and Innovation**

3-year programme · Fully taught in English

# ISM Study Programmes

## Graduate Studies



### **International Marketing and Management**

2-year programme · Fully taught in English



### **Financial Economics**

2-year programme · Fully taught in English



### **Innovation and Technology Management**

1.5-year programme · Fully taught in English



### **Global Leadership and Strategy**

1.5-year programme · Fully taught in English



### **Business Sustainability Management**

1.5-year programme · Fully taught in English

## Doctoral Programme in Management

PhD Degree, 4-6 years.

Partners: BI Norwegian Business School (Norway), Aarhus University (Denmark), Tartu University (Estonia).

Research areas: governance and leadership, human resource management, strategy and marketing, consumer behaviour, finance and risk management, change management and organisational development, business process management.



## Doctoral Programme in Economics

PhD Degree, 4-6 years.

Partners: Vytautas Magnus University (Lithuania) and Mykolas Romeris University (Lithuania).

The programme is designed to develop competencies allowing to identify relevant economic, financial and societal problems, to conduct high quality research and publish their results in internationally recognised peer-reviewed journals.

ISM doctoral student research contributes to the understanding of monetary policy and financial asset valuation, analysis of economic sector networks and the spread of economic shocks, national tax competition and corporate tax evasion, financial behaviour, corporate insolvency, the impact of emerging technologies on financial and labour markets, sustainability and other economic phenomena in the different contexts.



# Before You Arrive

## Health Insurance

Students who are the citizens of EU/EEA member countries are advised to bring the European Health Insurance Card (EHIC) and/or a private health insurance.

Insurance must guarantee the coverage of costs and expenses of the emergency medical aid, which may occur due to the foreigner's return to the foreign state due to health issues (transportation, including the escort of a personal health care expert (experts), as defined in the Law on Health System of the Republic of Lithuania.

The insurance coverage amount must be at least 30 000 Euros. The health insurance should be valid in Lithuania and in all Schengen area.

## Migration

### For EU / EEA citizens

Students coming to the Republic of Lithuania for more than 3 months in a 6 - month period, have to register their residence and obtain a certificate signifying the right to temporarily reside in Lithuania. Students have to do so within 3 months of arrival in Lithuania. More information can be found [here](#).

### For non EU / EEA citizens

Students shall apply for a national visa D prior to their arrival to the Republic of Lithuania. Students coming from countries where a visa-free regime applies, can enter the country without a visa and stay here for up to three months. Students staying in Lithuania longer than 3 months, shall apply for a national visa D in the Migration Department of the Republic of Lithuania. The decision on the issue of visa D shall be made within 15 days after the receipt of application. More information can be found [here](#).

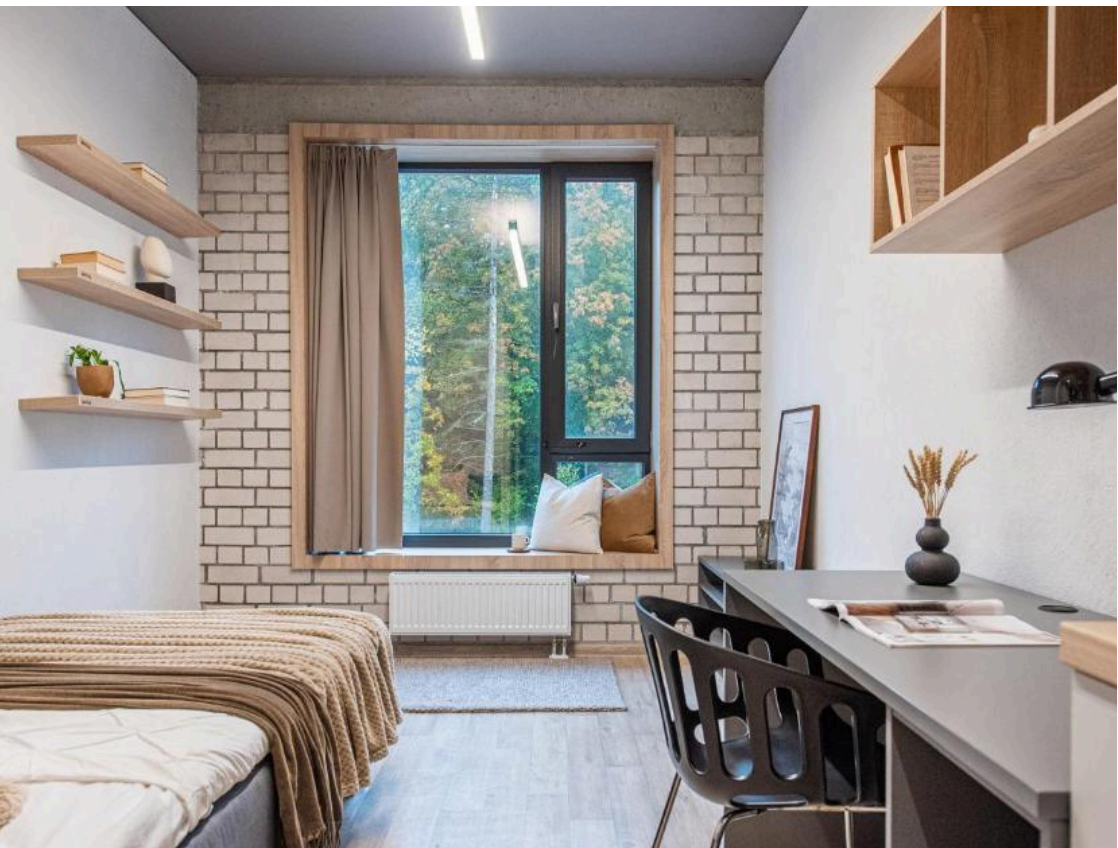
You can also consult: [hd.migration@ism.lt](mailto:hd.migration@ism.lt)

## Accommodation

ISM is located in the Old Town of Vilnius, minutes away from the city's most important sites, including Cathedral Square, Gediminas' Castle, the Bernardinai Garden, as well as many beautiful old churches, museums and restaurants.

Please be aware that ISM does not have its own dormitories, however, for the convenience of students ISM has signed contracts with some hotels/brokers. For up-to-date housing offers please visit [ISM website](#).

Students sign the accommodation contracts with properties directly.



# Vilnius - a Great Place to Live, Study and Work!

**#1 city offering the fastest public Wi-Fi in the world**

**#1 city in the world for attracting Tech Startups, according to Tech Start-up FDI Attraction Index 2019**

- One of the capital cities in Europe breathing the cleanest air, according to European Green City Index
- One of the greenest cities in Europe - 46% is dedicated to green space
- Walkalbe - getting to most places in Vilnius is just a matter of walking for a few minutes

## Price levels

Monthly high speed internet

**~ 10 euros**

Typical lunch

**~ 7 euros**

Rent for a one-room flat in the city centre

**~ 550 euros**

Monthly public transport ticket for students

**~ 6 euros**



# Student Life at ISM

## Creative Shock

Creative Shock is an annual business case competition for students from all around the world. Participants every year are gathered to solve business, marketing and PR problems for social enterprises and organizations.

In 2021 the competition was attended by 1504 participants from 71 countries.



## Erasmus Student Network

**ESN ISM** is a part of Erasmus Student Network, which is the biggest student organization in Europe. ESN ISM helps exchange students to integrate in Lithuania, introduces them to the culture and history, and organizes various events and trips.





# Student Life at ISM

## Buddy Programme

All exchange students are offered buddies - local students who help to facilitate and integrate international students into ISM community and local life. Buddy Programme is managed by ESN ISM.



## Student Clubs at ISM

Various students clubs are operating at ISM. There are clubs for fans of sports, marketing, books, politics and they are all looking forward to international students joining their activities.

Do not hesitate - it is a great way of meeting locals and feeling as a part of ISM community!

You can find more information [here](#).



# International Studies Office Team



Greta Kiškienė

Team Leader for International Studies  
[greta.kiskiene@ism.lt](mailto:greta.kiskiene@ism.lt)



Greta Tarnauskaitė

International Partnership Manager  
[greta.tarnauskaite@ism.lt](mailto:greta.tarnauskaite@ism.lt)



Indrė Kasputytė

International Studies Coordinator (Incoming)  
[indre.kasputyte@ism.lt](mailto:indre.kasputyte@ism.lt)



Kristina Laurinčiukaitė

International Studies Coordinator (Outgoing)  
[kristina.laurinciukaite@ism.lt](mailto:kristina.laurinciukaite@ism.lt)

You may address all your inquiries directly to [international@ism.lt](mailto:international@ism.lt)

**Migration:** [hd.migration@ism.lt](mailto:hd.migration@ism.lt)

**Housing:** [accommodation@ism.lt](mailto:accommodation@ism.lt)

---

**ERASMUS code:**  
**LT VILNIUS25**

**Find us on:**



**Address:**

**ISM University of Management and Economics,  
Gedimino pr. 7, LT-01103 Vilnius, Lithuania.**

---

**Supported by:**

**Erasmus+**

Enriching lives, opening minds.